



PRODUCT RANGE

TILE & STONE ADHESIVE | POLYMER BASED GROUT | EPOXY GROUT | GROUT PLUS
WALL CARE PUTTY | POWER PRIMER | LIQUID WATERPROOFING
WATERPROOFING SBR LATEX | POWERLOCK 2K WATERPROOFING | NEXTITE
BLOCK JOINTING MORTAR | FLOOR HARDENER | TILE CLEANER
POWER MASTIC | TILE SPACER



CORPORATE OFFICE: POWERGRACE INDUSTRIES LTD.
305, Dev Arc Mall, S.G. Highway, opp. Iscon Temple, Ahmedabad - 380015, Gujarat, India.
CIN: U85100GJ2013PLC075582

MANUFACTURING PLANT

PLANT I: POWERGRACE INDUSTRIES LTD.
Ceramic Zone, Tal: Prantij, Dist: Sabarkantha, Himatnagar – 383120, Gujarat, India.

PLANT II: POWERGRACE INDUSTRIES LTD.
Plot No. 7, Block No. 15, Near Sarvottam Hotel, Sachin Palsana Road, Palsana,
Intalva, Surat - 394315 Gujarat, India.

PLANT III: POWERGRACE INDUSTRIES LTD.
Timbdi Survey No 82 P 2, Plot No 23 And 24, Behind Orbit Chamber 1 And 2,
8 A National Highway, Morbi - 363642, Gujarat, India.

FOR INQUIRY & FEEDBACK

Toll Free No.: 1800 121 0141 | E-mail : care@powergraceindustries.com | web : www.powergraceindustries.com

NOTE : THE INFORMATION GIVEN IN THIS CATALOGUE IS FOR GENERAL GUIDANCE.
HOWEVER, COMPANY IS NOT RESPONSIBLE FOR ANY IMPROPER APPLICATION OF THE PRODUCT.



BEST SOLUTION FOR
Building Construction



▶ ENGLISH CATALOGUE





「ABOUT US」

Power Grace since 2011, has successfully penetrated in the market to give you the best products and services solution in construction Chemical industry right from tile adhesive, Wall Care Putty to Tile Cleaner.

Began from the Gujarat Market and today it has penetrated major states of India and it has emerged as most growing "BONDING SOLUTION" provider having more than 400 dealer network across the country.

We have professional qualified team to guide and support all our customers to give sheer satisfaction.

Armed with in-depth experience in the tile and marble industry, Power Grace brand provides a complete range of tiles & stone bonding solutions. We also offer tile installation as a service under this division.

Why Construction Chemical ?

Construction chemical is used to solve a specification problem related to construction:

- Increase the speed of construction
- improves the longevity
- Improves the ease of construction
- Improves the load bearing capacity
- Chemical load
- Abrasion load
- Mechanical
- Environment



INTERIOR - EXTERIOR - COMMERCIAL - RESIDENTIAL - INDUSTRIAL

TILE & STONE ADHESIVE | POLYMER BASED GROUT | EPOXY GROUT | GROUT PLUS

WALL CARE PUTTY | POWER PRIMER | LIQUID WATERPROOFING

WATERPROOFING SBR LATEX | POWERLOCK 2K WATERPROOFING | NEXTITE

BLOCK JOINTING MORTAR | FLOOR HARDENER | TILE CLEANER

POWER MASTIC | TILE SPACER



► From the desk of Associate Director

Excellency doesn't come through words, is felt through experience and thats exactly we give to the world through our products & services

Mr. Deepak Patel

VISION

To be a global leader in research & development and manufacture of quality products and provide value-added services for the construction chemicals industry.

MISSION

As one unit, the goal of Power Grace is to ensure super quality products and services to our customers all the time enhancing their life. As a result, our customers reward us with leadership in sales, profits and value creation allowing all humanity be it our employees, our share holders, customers and our company to grow and remain to prosper.

VALUES

Values drive culture and therefore followed with action. Our core values enable product excellence and customer satisfaction.

*Integrity & Transparency
Respect & Recognition
Commitment & Accountability Excellence*



The Complete
Solution for

BUILDING CONSTRUCTION

Chemicals



INDEX



TILE & STONE ADHESIVES	4-10
POWER GROUT	11
EPOXY GROUT	12
POWER PRIMER	13
WALL CARE PUTTY	14
POWERLOCK 2K WATERPROOFING	15
LIQUID WATERPROOFING	16
WATERPROOFING SBR LATEX	17
BLOCK JOINTING MORTAR	18
FLOOR HARDENER	19
NEXTITE	20
TILE & STONE CLEANER	21
TILE SPACER	22
LIST OF CLIENTS	23
APPLICATION PROCEDURE	24

Adhesives



Descriptions

Ready to use grey cement based polymer modified non-shrink, self-curing tile adhesive for floor tiles fixing. It provides excellent adhesion and waterproofing properties.

Area of Applications

- Suitable for fixing tiles of apparent porosity greater than 3%
- Fixing ceramic & mosaic tiles on floor surface.

Benefits

- Ready to use, only water needs to be added as per site condition.
- Excellent waterproofing properties.
- Low shrinkage and crack resistant
- Better bond than conventional cement based mortar.

Standards & Class



Type 1 as per
IS 15477:2019

C1 as per
EN 12004:2008

PG 150 20kg, 40kg (G)



STRONG BONDING



TILES SOAKING NOT REQUIRE



DURABILITY ENSURED



ENSURED QUALITY



CURING IN 24 HRS



APPLICATION BETWEEN 5°C & 30°C



THICK BED OF 6-12MM



Adhesives



Coverage

25-30 sq.ft for 20kg bag at 6mm thickness

Shelf Life & Storage

Shelf life is 1 year from the date of manufacturing. Store the material in cool and dry place away from moisture.

Shear Adhesion Strength

@ 28 Days, Dry Condition

Required: 1.0 N/MM²
Result: 1.34 N/MM²



Descriptions

Ready to use grey cement based non-shrink, self-curing tile adhesive for fixing tiles on walls and on floors with good adhesion strength.

Area of Applications

- Suitable for fixing tiles of apparent porosity greater than 3%
- Fixing normal size tiles & mosaic tiles on floor and on wall.
- For repairs and rehabilitation work over tile.

Benefits

- Universal tile fixing polymerized cementitious adhesive, best suits Indian working condition.
- Excellent waterproofing properties.
- Better bond than conventional cement based mortar
- Low shrinkage and crack resistant
- Good Open Wet Time

Standards & Class



Type 1 as per
IS 15477:2019

C1T as per
EN 12004:2008

PG 250 (G/W) 20kg, 40kg (G)



STRONG BONDING



TILES SOAKING NOT REQUIRE



DURABILITY ENSURED



CURING IN 24 HRS

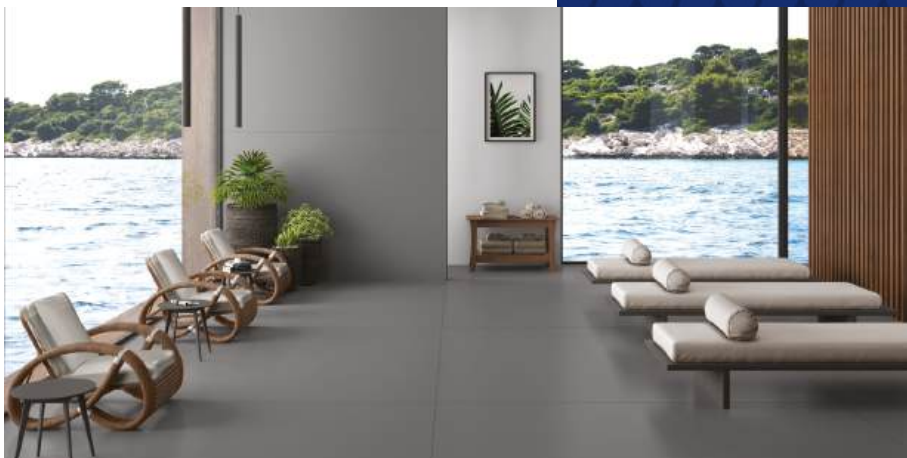


APPLICATION BETWEEN 5°C & 30°C



THICK BED OF 6-12MM

Adhesives



Descriptions

PG-400 is a Grey / White cementitious polymer modified tile adhesive for interior and exterior installation of ceramic, vitrified Glass Tiles, natural stones, pavers & bricks.

Area of Applications

- Suitable for fixing tiles of apparent porosity less than or equal to 3%.
- Interior and Exterior bonding of natural stones, mosaic tiles (they are not sensitive to moisture).
- Interior and Exterior bonding of ceramic and vitrified tiles of every type.

Benefits

- Easy application and better work ability.
- Excellent adhesion, non-shrinkage.
- Excellent waterproofing characteristics.
- High Strength & Good open wet time.

Standards & Class

Type 2 as per
IS 15477:2019

C2T as per
EN 12004:2008

PG 400 (G/W) 20kg, 40kg (G)



Adhesives



Coverage

25-30 sq.ft for 20kg bag at 6mm thickness

Shelf Life & Storage

Shelf life is 1 year from the date of manufacturing. Store the material in cool and dry place away from moisture.

Shear Adhesion Strength

@ 28 Days, Dry Condition

Required: 1.25 N/MM²

Result: 1.97 N/MM²



Descriptions

PG-600 (G/W) is a one-pack premixed adhesive consisting of high quality cements, selected silica/quartz sands and specific additives with a high polymer content. It is suitable for Large Format Tiles, Glass Tiles and natural stone for interior and exterior application.

Area of Applications

- On indoor and outdoor Wall and Floor Application.
- Suitable for over-tiling indoor applications on old tiles, without primer.
- Suitable for applications where high performance is required, i.e. industrial areas, facades on walls and floors

Benefits

- No vertical slipping & Extended open time.
- Frost-proof & One-pack.
- Can be applied up to 10 mm thickness.
- Can be applied on cement waterproofing mortars & no curing & soaking of tiles.

Standards & Class

Type 3 as per
IS 15477:2019

C2TE as per
EN 12004:2008

PG 600 (G/W) 20kg, 40kg (G)





Descriptions

PG-800(high limit multi purpose) is a polymer modified cement based high performance, high strength, the adhesive developed to fix large size tiles/ slabs of granite, marble, stones suitable for both internal and external thin bed application.

Area of Applications

- Suitable for demanding external application.
- Suitable for mosaic, Slim tiles, composite marbles & quartz stone.
- Suitable for various other substrates where high bearing capacity is required.

Benefits

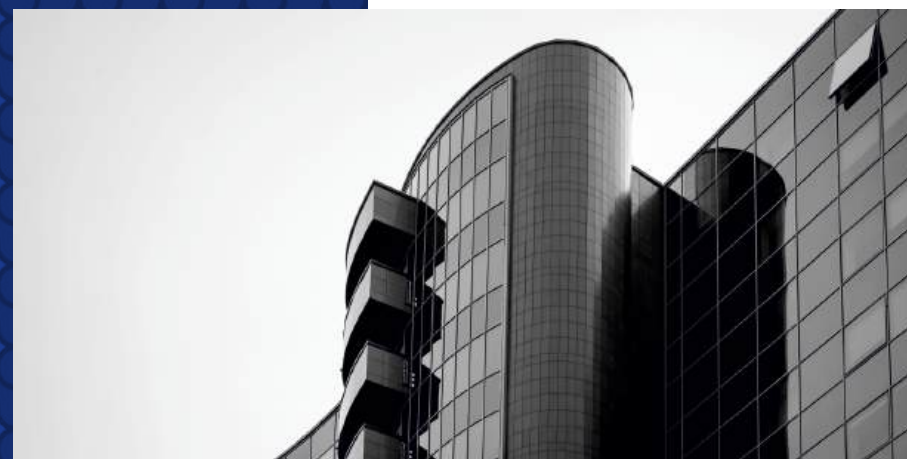
- Single component ready to use.
- High working time with extended open time.
- Excellent bond strength.
- No curing is required.

Standards & Class

Type 4 as per
IS 15477:2019

C2TE S1 as per
EN 12004:2008

PG 800 (G/W) 20kg, 40kg (G)



Coverage

8-10ft²/ per kg. (depending upon surface & side condition)

Shelf Life & Storage

PG-1000 eco has a shelf life of 1 year in unopened packs, if kept in a dry storage condition and protect from direct sun light. Before using each component for APPLICATION stir WELL before use.

Shear Adhesion Strength

@ 28 Days, Dry Condition
Required: 6.0 N/MM²
Result: 6.85 N/MM²

Descriptions

PG-1000 is a two part polyurethane based solvent and water free tile adhesives which are flexible, waterproof, high adhesion and chemical and mechanical resistance laying with no vertical slip on rigid and non-absorbent substrates.

Area of Applications

- Indoor and Outdoor bonding of wall and floor ceramic tiles, porcelain tiles, Vitrified Tiles, Marble, & all natural stones.
- Concrete, screeds, renders, asphalt, wood, metal, pvc, reinforced polyester, cement sheet.
- Absorbent and Non-absorbent substrates.
- Rigid substrates

Benefits

- Ultra High Strength and adhesion
- Water proof & flexible Good resistance to acids and other chemical reaction.
- High deform-ability & Highly thixotropic

Standards & Class

Type 5 as per
IS 15477:2019

R2TE as per
EN 12004:2008

PG 1000 eco PU BASED ADHESIVE

1 kg | 5 kg | 10 kg



Adhesives



Descriptions

PG 1100 S2 is a Synthetic resin and highly flexible polymer fiber modified special adhesive mortar for installing large format vitrified tiles, composite marble/quartz (Engineered stone) and natural stone slabs with high safety reserves.

Area of Applications

- Vitrified tiles and slabs as well as porcelain stoneware.
- Large format tiles and marble slabs 800X2400 mm, 1200X2400mm
- Natural stones with a low tendency to discolor.
- Glass tiles, Glass mosaics and mosaics Synthetic resin bonded slabs (agglomerate slabs).

Benefits

- Single component ready to use.
- High slip resistance.
- High working time with extended open time.
- Excellent bond strength.
- No curing is required.

Standards & Class

Type 4 as per
IS 15477:2019

C2TE S2 as per
EN 12004:2008

PG 1100 S2 (G/W) 20kg



Power Grout



Coverage

30-35 sq.ft for 20kg bag at 6mm thickness

Shelf Life & Storage

Shelf life is 1 year from the date of manufacturing. Store the material in cool and dry place away from moisture.

Required: 1.5 N/MM²

Result: 2.95 N/MM²

Coverage

Pack size Coverage 1 kg - Consumption depend on joint width, 20 kg-size of tiles Surface

Shelf Life & Storage

12 months from date of production if stored properly in original, un-opened and undamaged sealed packaging

Descriptions

Power Grout is a Single component, pre-packed tile grout combining cement with selected pigment and several admixtures. It fills the spaces between tiles, provides stability, and also aesthetic function. When added to water it readily blends to produce a smooth creamy paste which when sets, becomes water, fungus and mould resistant.

Area of Applications

- For filling the spaces of homogeneous tile, ceramic tile, marble, granite, mosaic, and natural stone, over a range of applications as below:
- Floor and wall, Interior and exterior, Dry and wet area*
- (before application make sure of SSD)

Benefits

- Cost effective service life, fungus and mould resistant.
- Easy to apply by adding water for a thixotropic, non-slump grout. • Ideal for use in submerged condition.
- Available in range of attractive colours



POWER GROUT

1 kg

Epoxy Grout



Descriptions

Epoxy grout is a three component/two-component Epoxy based joint filler designed for use in application of ceramic tile, vitrified tile and all natural stone. The excellent feature of Epoxy grout is that, it can easily be cleaned from any surface with water using scrubber/sponge within stipulated time.

Area of Applications

- Suitable for Residential Buildings.
- Suitable for Commercial Buildings.
- Suitable for Bathrooms, Swimming Pools, Cafeterias etc.

Benefits

- Hard and durable joints, Temperature resistant, Stain free
- Non-cracking or powdering.
- Water cleanable when fresh.
- Available in range of attractive colors & Chemical resistant

EPOXY GROUT

1 kg | 5 kg | 10 kg

Available 37 Attractive Colour



Power Primer



Coverage

The approximate covering capacity is 60 to 70sq. ft. per coat
It depends on surface condition / preparation and porosity of the surface.

Coverage

Please refer the coverage chart (Epoxy Shade card) as it depends on the tile size, joint width and depth.

Shelf Life & Storage

Packed containers of this product are guaranteed to be of first quality for two (2) years if stored at temperatures >32°F (0°C) and <110°F(43°C)

Shelf Life & Storage

Best before 12 months if stored properly in undamaged and unopened original sealed packaging in dry and cool conditions.



Descriptions

We have an excellent water based cement primer. For better bonding & grater paint effect in interior/exterior surfaces.

Area of Applications

- Cement
- Plastered walls
- Asbestos
- Concrete

Benefits

- A water base cement primer
- Alkaline resistant
- Good adhesion to interior masonry surfaces for both new & old cement surfaces
- Superior filling property
- Results in exceptional quality and durable finish coat

POWER PRIMER

1 ltr | 4 ltr | 20 ltr

Wall Care Putty



Descriptions

Wall Care Putty is ready to use water resistant white cement based finishing / smoothing material for indoor and outdoor plastered surfaces.

Area of Applications

- White cement based finishing / smoothing material for indoor and outdoor plastered surfaces.
- Renders a smooth and durable surface and acts as an under layer for all kinds of decorative paints.

Benefits

- Being a cementitious material it has better adhesiveness and durability with the concrete walls.
- Can be applied on both interior and exterior walls and ceilings.
- Does not require any water curing after application thus saving time & cost.
- Being water resistant hence can be applied on moist surfaces.
- Accepts any kind of paint or distemper application on it.
- Can be applied on used surface after proper preparation.
- It prevents the growth of algae and fungi on walls.
- It is Eco-Friendly hence does not contain lead, oil or toxic material. • Excellent work ability & ease of application

WALL CARE PUTTY

20 kg | 40 kg



Powerlock 2k Waterproofing



Coverage

1.0-1.1 Kg/m²/coat (min 2 coats recommended).
Coverage always depending upon type and quality of the substrate

Shelf Life & Storage

Shelf life is 12 Month from the date of manufacturing in unopened
Store in a cool & dry place

Descriptions

Powerlock 2K waterproofing is two component acrylic-modified flexible cementations waterproofing membrane coating particularly designed for Concrete and Masonry surface, which is supplied in ready-mix kits (two parts). When the powder part is mixed with acrylic-modified emulsion and applied. It will become flexible and seamless waterproof membrane and acts as an excellent water barrier to Concrete and Masonry Surface.

Area of Applications

- Concealed roofs
- Parking decks
- Bathroom & toilet
- Kitchen, balconies and planters
- Swimming pools, water tanks and reservoirs
- Concrete foundations, basements wall and lift pits
- Any other concrete, cement or masonry surface subject to damage from moisture

Benefits

- Quick drying
- Easily applied by brush or trowel
- Flexible
- Excellent adhesion to concrete and masonry substrates.
- Non-toxic substances
- Environmentally friendly – VOC
- Can be applied on damp surface
- Can exhibit Positive and negative water hydrostatic pressure 5 bar and 2 bar respectively

POWERLOCK 2K WATERPROOFING

3 kg | 15 kg



Liquid Waterproofing



Descriptions

LW is specially formulated additive composed of cement compatible, surface active agent, polymers & additives. It is used as an additive for cement concrete plasters. It improves the integral waterproofing properties of cement concrete & plaster after curing.

Area of Applications

- Waterproofing of cement - sand mortar & cement concrete used in Roof slabs & screeds Basements Water tanks & water retaining structures Bathrooms balconies Sumps drains External plastering

Benefits

- Compatibility: Being a liquid, easily dispersible & compatible with concrete & mortar mixes.
- Durability: Increases durability by improving integral waterproofing of concrete.
- Cohesiveness: makes the concrete / mortar more cohesive.
- Permeability: It reduces permeability of water into concrete.
- Breathing: It retains the breathing efficiency of concrete.
- Strength: Does not affect the setting time and strength of concrete.
- Shrinkage: Reduces shrinkage crack development in plaster & concrete.
- Economics: It is an economical additive as compared to other waterproofing materials.

LW (LIQUID WATERPROOFING)
1 Ltr / 5Ltr / 20 Ltr

Shelf Life & Storage

12 months from date of production if stored properly in original, un-opened and undamaged sealed packaging

Waterproofing SBR Latex



Coverage

Slurry primer - approximately 4-5 m²/ liter depending on substrate porosity.

Shelf Life & Storage

WATERPROOFING SBR LATEX has a shelf life of 12 months if kept in a dry and unopened condition.

Descriptions

WATERPROOFING SBR LATEX is a synthetic rubber emulsion which when added to cement slurry/ cement mortar/concrete/grout provides good adhesion and water resistance. It comes in the form of a milky liquid. It is fully soluble in water and is to be added directly to the gauging water of mortar/concrete/ cementitious grout.

Area of Applications

- For waterproofing of roof slabs, sunken slabs, basements, water tanks, sunshades etc. In combination with cement. As a bonding agent for usages in repair and plastering For making polymer mortar for repairs mortars etc.

Benefits

- Single component liquid which improves cohesion and work ability and easily gauged as required.
- Provides waterproof repairs, renders and toppings which are resistant to freeze/thaw cycling.
- Good tensile, flexural and UV resistant properties which facilitates even thin applications.
- Super bonding to concrete, masonry, stonework, plaster, block board, clip bricks, ceramic tiles etc.

WATERPROOFING SBR LATEX
1 ltr | 5 ltr | 20 ltr



Block Jointing Mortar



Descriptions

BLOCK JOINT MORTAR is a superior water resistant cement based mortar specially formulated for jointing blocks. It is contains selected graded dry sand grey cement and imported polymer to improve work ability, water retention durability and adhesion. It is more resistant corrosive environment.

Benefits

- Save Time
- Cost Effective
- Can be applied by ordinary mason-no special skills required

BLOCK JOINTING MORTAR
40 kg

Coverage

- On Light weight block-thickness 10-12mm mortar 18-20sq.ft/40kg bag
- On Red brick wall-thickness 10-12mm mortar-12-15sq.ft/40kg bag

Shelf Life & Storage

Block joint mortar should be stored in a dry place. For best results use it within 12 months from date of manufacturing.



Floor Hardener



Coverage

- As per site condition coverage depend
- Light to moderate duty on floor -2.5 to 3.5 kg/m²
 - Moderate to heavy duty floor -3.5 to 5.0 kg/m²
 - Super heavy duty -5.0 to 7.5 kg/m²

Shelf Life & Storage

12 months from the date of manufacturing in unopened conditions
STORAGE IN COOL & DRY PLACE



Descriptions

Power grace floor hardener is ready blend of metallic/nonmetallic inert high quality aggregates and cement which applied dry shake to the concrete surface. it provide protection to floor against wear impact and abrasion. Being nonmetallic power grace floor hardener non slip surface which will never rust and disintegrate.

Area of Applications

- Loading bays
- Trucking lanes
- Car parking
- Heavy duty workshops
- Machine shops,
- Warehouse
- Helipad Air craft hangers

Benefits

- High abrasion surface does not rust or stain
- Higher resistance to abrasion wear and impact Free from dusting easily cleaned and attractive floor Maintenance free and long life performance

FLOOR HARDENER
20 kg



Descriptions

Nextite Fast & Clear is a high strength epoxy adhesive that enables fast permanent repairs to many surfaces, including fibre glass, concrete, glass, metals, wood, and some plastics. The two components are easily mixed to form a clear, waterproof and chemical resistant bond which is gap filling and capable of bonding poorly mated surfaces. Suitable for interior and exterior applications.

Area of Applications

Ideal for emergency repair work in and around the home such as repairing of figurines, costume jeweler, toys, broken ceramics, porcelain, bird baths and much more. It is ideal for handicraft applications and gluing of small parts where clamping is not possible.

Benefits

- Hard and durable joints, Temperature resistant, Stain free..
- Non-cracking or powdering.
- Water cleanable when fresh.
- Available in range of attractive colors & Chemical resistant

Shelf Life & Storage

12 months from date of production if stored properly in original, un-opened and undamaged sealed packaging



Descriptions

A highly effective multipurpose cleaner designed for everyday maintenance of tiles, marbles & natural stones etc. Suitable as a general purpose cleaner. It is very much safe and less reactive (compared to other cleaners based on Hydrochloric acid) especially on marble surfaces. Designed specially for removal of lime scale & for everyday maintenance of tiles, marbles, natural stones, etc. Ideal for regular maintenance of heavily trafficked areas such as shopping malls, hotels etc.

Area of Applications

- Walls Floors
- Kitchens
- Bathrooms Counter tops
- Glazed Floor Tile, Terrazzo, Marble, Terra cotta, Brick etc.

Benefits

- Daily maintenance
- General purpose cleaner
- Effective against lime scales
- Mild enough to use on stones/porous tiles

Shelf Life & Storage

POWER TILE & STONE CLEANER has a shelf life of 18 months in original unopened container. Store in dry conditions between 5°C and 30°C, protect from direct sunlight

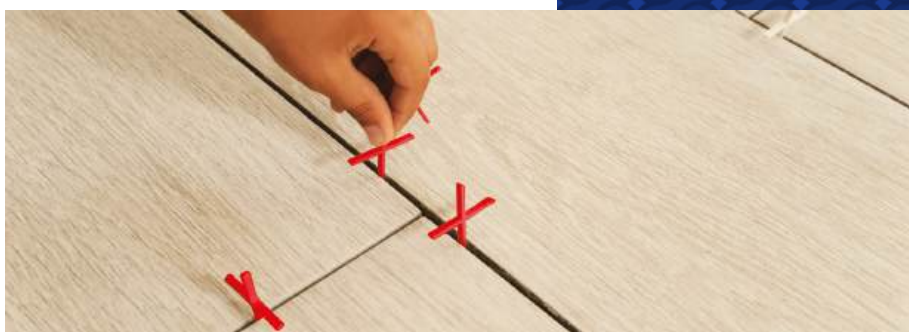


NEXTITE
FAST & CLEAR EPOXY ADHESIVE

500Gm | 1Kg

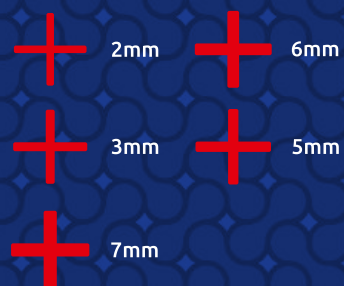
POWER TILES & STONE CLEANER
1 ltr

Tiles Spacer



Benefits

Tile spacer are made of virgin flexible PVC. Tile spacers used for laying of ceramic, vitrified porcelain, marble and stone in grout. The spacers are manufactured to exact dimensions for even grout lines and perfect finish. Our tile spacers assure better bonding to the joint fillers and facilitates the removal and replacement to single tiles, it needed.



TILES SPACER

100 Pcs. in one pouch

Clients



Application Procedure for Tile Adhesive & Grouts

Adhesives

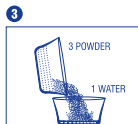
Direction for Use



Remove any oil or grease and dust
तेल, घीस और धूल-मिट्टी को हटाएं



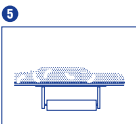
Pour water into the bucket
खाली बाल्टी में पानी डालें



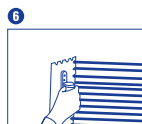
Add the powder and mix
पाउडर को डालें और मिक्स करें



Add water until the desired consistency is achieved
संतुलित पेस्ट बनाने के लिए जरूरत के हिसाब से पानी डालें



Apply the adhesive on the surface with the smooth part of the trowel
खाली पे एडहेसिव फैलाने के लिए, ट्रुवेल के सपाट हिस्से का इस्तेमाल करें



Spread the adhesive using the toothed part of the trowel

ट्रुवेल के तृतीयांश भाग का उपयोग करके एडहेसिव फैलाएं



As per requirement do back buttering on tile

बढ़ी सहाज की टाइल्स के लिए एडहेसिव को टाइल्स के पीछे जरूर लगाएं



While fixing the tile ensure that the back surface of tile is fully covered with adhesive

टाइल को फिफकने से पहले टाइल की पिछली सतह पर एडहेसिव पूरी तरह से लगा है की नहीं यह जांच लें



Remove excess adhesive from the tile surface

जरूरत से ज्यादा एडहेसिव टाइल की सतह पर है तो निकाल लें



Grout after 24 hour of fixing

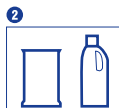
फिफिंग के 24 घंटे बाद खोचा भरें

Grouts

Direction for Use



Remove any oil or grease and dust
तेल, घीस और धूल-मिट्टी को हटाएं



Pour water into the bucket as required
खाली बाल्टी में पानी डालें



Add the grout powder to the bucket and mix
पाउडर को डालें और मिक्स करें



Mix the grout with a trowel for 5 to 10 minutes.
पाउडर पाउडर को 5 से 10 मिनट के लिए ट्रुवेल के साथ मिलाएं



Leave the mix grout for 5 to 10 minutes until it strengthens through chemical reaction

रासायनिक प्रतिक्रिया के माध्यम से मजबूत होने तक मिश्रित पाउडर को 5 से 10 मिनट तक छोड़ दें



Re-mix and apply the grout on desired groove joints

पाउडर को फिर से मिलाएं और घुस जोड़ों में भरें



After 20 to 30 minutes remove the excess grout from the tile surface using damp sponge or cloth

20 से 30 मिनट के बाद नम स्पंज या कपड़े का उपयोग करके टाइल की सतह के अतिरिक्त पाउडर को हटा दें

Notepad